

a

W a P a BTEC

The BTEC HNC/HND in Hospitality Management is aimed at you if

W BTEC

BTECs are work-related qualifications for students taking their first steps into employment, or for those already in employment

qualification at Levels 4 and 5

C a

Address

Sunita Basnet

Jeetendra Rokaya

Dibya Prabha Jha

F



A

a

Diploma. Progressing to Level 6, they conclude their final year in

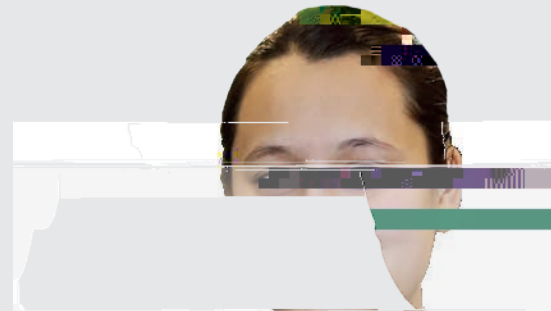
students to excel in their chosen field or pursue further hospitality

Y F



D a

I a



PROGRAMME CATALOGUE
BA (Hons) Hospitality
Management (BHM)

BA (Hons) Hospitality Management (BHM)

Level 3/Year 0: International Foundation in Hospitality

Semester 1

Front Of ice Operations

15Credits

Semester 2

Holders of the Level 4 HNC will be able to communicate accurately and appropriately and they will have the qualities needed for employment that requires some degree of personal responsibility. They will have developed a range of transferable

meet challenging targets within a given resource.

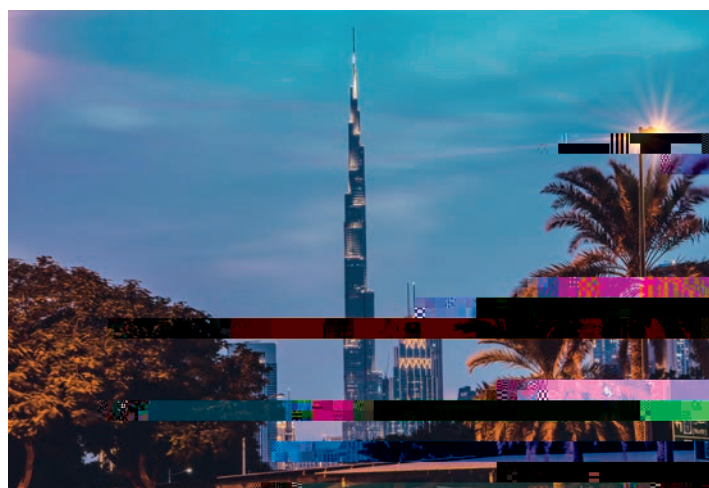
Level 4: Pearson BTEC HNC - Dubai

Level 5: Pearson BTEC HND - Dubai

Front Of ice Operations Management

15Credits

1^Y



Hospitality Management' pathway. Holders of the HND will have developed a sound understanding of the principles principles more widely. They will have learned to evaluate the and will have the qualities necessary for employment in

Entry Requirements

Foundation Entry

10+2/CBSE or equivalent 55% and above

Aggregate score A Level - Minimum 3.5 credits with 3 full credits